

Key Features And Highlights

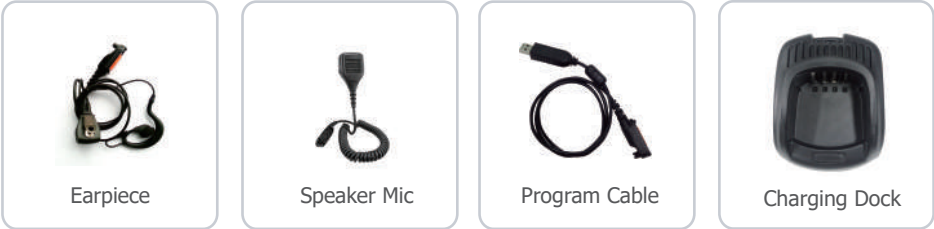
Specifications		
Bands	Asia-Pacific Version TDD-LTE: B38/B39/B40/B41 FDD-LTE: B1/B3/B5/B8 TD-SCDMA: B34/B39, EVDO/CDMA: BC0 WCDMA: B1/B8, GSM: 900/1800MHz	Europe-Africa Version LTE FDD: B1/B3/B5/B7/B8/B20 LTE TDD: B38/B40/B41 WCDMA: B1/B5/B8 GSM: 850/900/1800/1900MHz
	North America Version LTE FDD: B2/B4/B5/B7/B12/B13/B25/B26 WCDMA: B1/B2/B4/B5/B8 GSM: 850/1900MHz	Australia Version LTE FDD: B1/B3/B5/B7/B8/B28 LTE TDD: B40 WCDMA: B1/B2/B5/B8 GSM: 850/900/1800/1900MHz
RAM+ROM	1G+8GB	
System Version	Android 7.1	
Display	1.77"Color Display	
Dimension(H*W*D)	126*54*35 mm	
Weight	About 318g (Include Belt Clip)	
Ingress Protection	IP67	
Battery	3.8V 4000mAh main Battery, 60mAh backup battery built in	
SIM Card	Nano ,Dual-SIM Card	
Speaker	8Ω, 1W	
WiFi	Asia-Pacific Version: 2.4G Europe-Africa / North America / Australia Version:2.4G&5G	
Positioning	GPS	
Mandown	Available	
NFC	Optional	
Working Temperature	-20 ℃~+60 ℃	
Store Temperature	-30 ℃~+70 ℃	

The specification or function with * remark is the optional one. All specifications are subject to change without notice due to continuous development.

Standard Accessories



Optional Accessories



CC01 Pro 4G LTE PoC Radio
Talk Worldwide

- High-performance Chip with Qualcomm CPU
- UPS (Uninterrupted Power Supply)
- Loud Speaker with Noise Reduction
- 1.77-inch Color Display
- Dual-SIM Card
- Long Battery Life
- IP67 Ingress Protection





Key Features



Push to Talk Globally without range limited

The Global Talk service could be supported via the 4G public mobile network.



UPS (Uninterrupted Power Supply)

Continuous Power Supply with Internal backup battery when replacing the main battery pack.



Voice Announcement

All the information including working status and groups could be voice broadcasted, which makes every operation could be observed clearly.



Reliable and Durable

IP67 Ingress Protection and MIL-STD-810 G can meet with the requirements of harsh service applications.



Color Display

The full-color display makes the status information to be shown perfectly.



Loud Speaker with Noise Reduction

Professional audio design guarantees good audio quality for individual call, group call and emergency call.



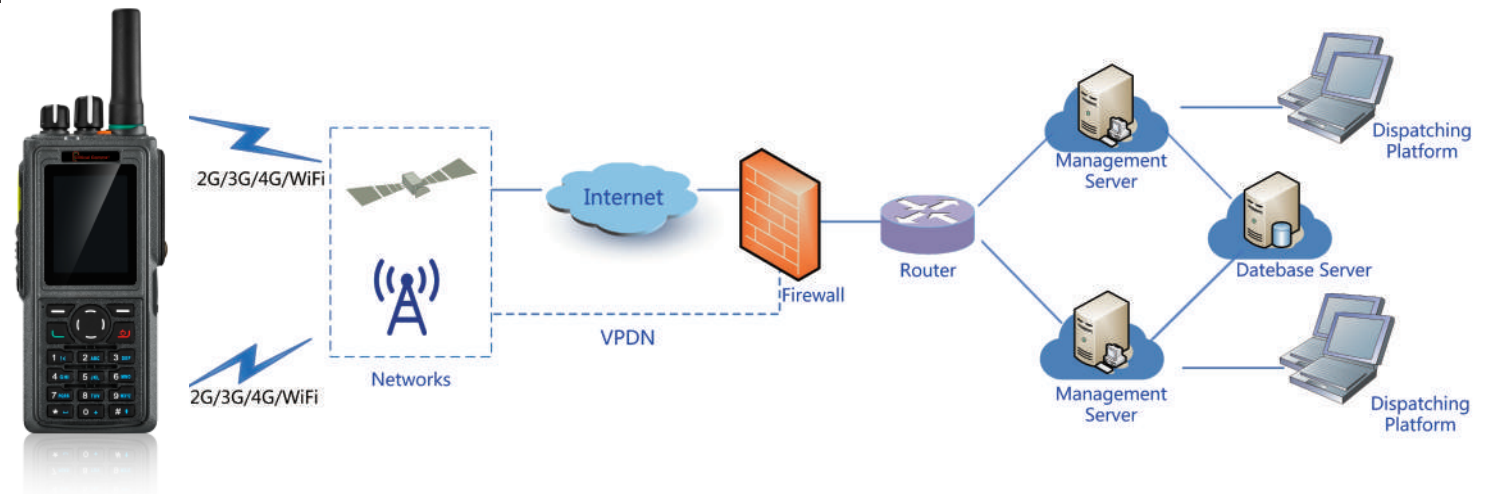
Long Battery Life

4000mAh Lithum-Ion high capacity battery, can meet the longer endurance through the power optimization and other technical methods.



Open Extended API Interface

Open Extended API Interface, and supports the matching of 3 rd communication platform



Multiple Calls

Multiple Call types includes private call, group call, all call, broadcast and emergency call. It supports one to one, one to many which make the communications more flexible with high efficiency.



Multiple Dispatching Service

The functions like Members Status, Private Call, Group Call, Call barring, Call Priority, Dynamic Group, Call Record, Call Playback, GPS replay are available on the dispatching platform, to enable kill, stun, Geo-fencing, GPS tracking, Patrol and others.



Remote Terminal Management

Remote terminal management could be realized by the Control Center, including dyanmic grouping, call priority, account management. Meanwhile, call priority, monitor, stun and other functions with Cloud Network Management System makes a more flexible management.



Converged Audio Communication

The PoC system could communicate with the other systems including Analogue, DMR Tier2, and DMR Tier3 via the gateway.

Industries

